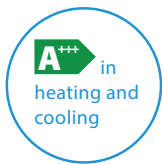




FTXM-M

Smart comfort

Energy efficiency up to A+++



Daikin's FTXM-M features up-to-date technology and built-in intelligence. This ensures that it always performs to the highest standards and an energy rating as high as A+++ in cooling and heating.

European design for European homes

Daikin FTXM-M is a sleek, unobtrusive air conditioning unit that matches European sensibilities regarding interior design. This split system wall mounted air conditioner meets European technical standards with impressive functionality.

Practically inaudible

It's easier to be yourself in a peaceful environment. Daikin FTXM-M runs so quietly, you'll almost forget it is there.



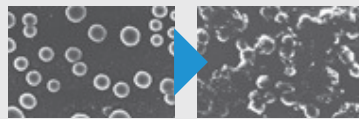
Fresher, cleaner air with controlled comfort

Daikin makes a room comfortable by cleaning the air and distributing it around the room – without disturbing you. The air cycles through the photocatalytic purification filter to break down odours. Then Daikin's Flash Streamer destroys any viruses or moulds before releasing pure and safe air into the room. 3D airflow circulates the air both vertically and horizontally. For added comfort, the 2-area intelligent eye directs air away from you when you're in the room and switches to energy saving mode when you're not.

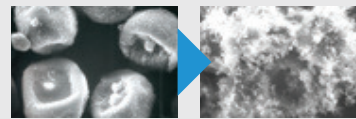
Flash Streamer technology



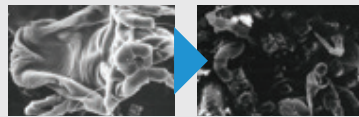
Virus before and after irradiation



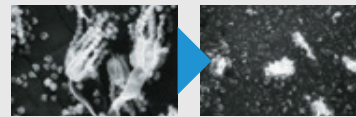
Pollen-based allergen before and after irradiation



Fungal allergens before and after irradiation



Allergens from animate beings before and after irradiation



Viruses and allergens were placed on the electrode of the streamer discharge unit and then photographed through an electron microscope after being irradiated. (Testing organization: Yamagata University and Wakayama Medical University)



FTXM-M + RXM-M

BLUEEVOLUTION

Efficiency data	Seasonal efficiency (according to EN14825)							Indoor unit		Outdoor unit	Refrigerant	
	Cooling capacity	Heating capacity	Energy label	Pdesign	SEER	SCOP	Annual energy consumption	Dimensions	Sound power level	Sound power level	Type/GWP	Charge (kg/TCO ₂ Eq)
	Min./Nom./Max. (kW)	Min./Nom./Max. (kW)	Cooling/Heating	Cooling/Heating (kW)	Cooling	Heating	Cooling/Heating (kWh)	H x W x D (mm)	Cooling/Heating (dBA)	Cooling/Heating (dBA)		
20	1.3/2.0/2.6	1.3/2.5/3.5	A+++	2.00/2.30	8.53	5.10	83/632	272x811x294	57/-	60/-	R-32/ 675	1.2/0.8
25	1.3/2.5/3.2	1.3/2.8/4.7		2.50/2.40	8.52		103/659		57/-			
35	1.4/3.5/4.0	1.4/4.0/5.2		3.40/2.50	8.51		140/686		60/-			
42	1.7/4.2/5.0	1.7/5.4/6.0	A++	4.20/4.00	7.50	4.60	196/1,217	295x1,040x300	61/-	63/-		1.3/0.9
50	1.7/5.02/5.3	1.7/5.8/6.5		5.00/4.60	7.33		239/1,400		60/-			
60	6.00	7.00		6.00/4.60	6.90		304/1,498		61/-			1.5/1.0
71	7.10	8.20		6.80/6.20	6.11		390/2,278		62/-			66/-

Contains fluorinated greenhouse gases

*Note: blue cells contain preliminary data



FTXP-KV



FDXM-F

Providing high efficiency and comfort

- › Discreet, stylish front panel blends easily with the wall, and matches any interior décor
- › Inaudible in silent mode
- › Online controller (optional): control your indoor from any location with an app, via your local network or internet
- › Dry programme allows humidity levels to be reduced without variations in room temperature



Compact concealed ceiling unit

- › Compact dimensions enable installation in narrow ceiling voids (with a height of only 200mm)
- › Discreetly concealed in the ceiling: only the grilles are visible
- › Low energy consumption
- › Dry programme allows humidity levels to be reduced without variations in room temperature



FTXP-KV

BLUEEVOLUTION

Efficiency data	Seasonal efficiency (according to EN14825)							Annual energy consumption	Dimensions H x W x D (mm)	Indoor unit			Outdoor unit	Refrigerant	
	Cooling capacity	Heating capacity	Energy label	Pdesign	SEER	SCOP	Sound pressure level (High/Nom./Low/Silent operation)			Sound power level	Sound power level	Sound power level		Type/GWP	Charge (kg/TCO ₂ Eq)
	Min./Nom./Max. (kW)	Min./Nom./Max. (kW)	Cooling/Heating	Cooling/Heating (kW)	Cooling	Heating	Cooling/Heating (kWh)			Cooling (dBA)	Heating (dBA)	Cooling/Heating (dBA)		Cooling/Heating (dBA)	
25	Only available in multi model application							286x770x225	39/33/25/20	38/34/28/23	55/55	Only available in multi model application	R-32/675	-	
35									40/33/26/20	40/34/28/23					
50									43/34/27/20	43/35/29/26	58/58				



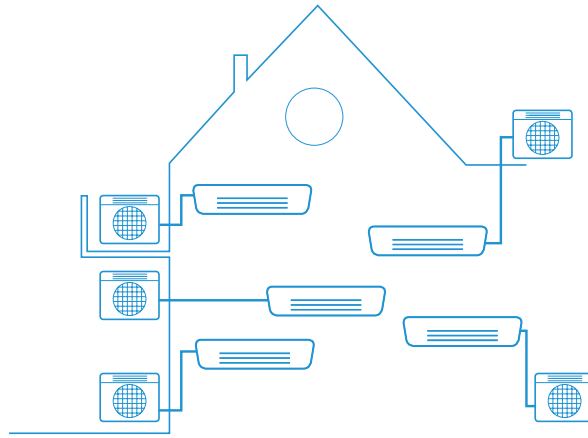
FDXM-F

BLUEEVOLUTION

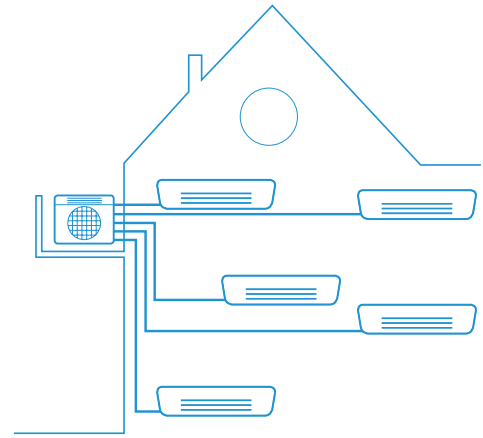
Efficiency data	Seasonal efficiency (according to EN14825)							Annual energy consumption	Dimensions H x W x D (mm)	Indoor unit			Outdoor unit	Refrigerant	
	Cooling capacity	Heating capacity	Energy label	Pdesign	SEER	SCOP	Sound pressure level (High/Nom./Low/Silent operation)			Sound power level	Sound power level	Sound power level		Type/GWP	Charge (kg/TCO ₂ Eq)
	Min./Nom./Max. (kW)	Min./Nom./Max. (kW)	Cooling/Heating	Cooling/Heating (kW)	Cooling	Heating	Cooling/Heating (kWh)			Cooling (dBA)	Heating (dBA)	Cooling/Heating (dBA)		Cooling/Heating (dBA)	
25	Only available in multi model application							200x750x620	35/33/27	35/33/27	53/53	Only available in multi model application	R-32/675	-	
35									38/36/30	38/36/30	55/55				
50									38/35/30	38/36/30	56/56				
60															

Contains fluorinated greenhouse gases

*Note: blue cells contain preliminary data



Pair application:
one outdoor unit per room



Multi application:
optimal solution when cooling or heating multiple rooms

Flexible installation – the elegant choice

Cooling with A+++ efficiency


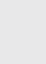



Designed with energy-efficient compressors and refrigerants to provide optimum performance, most of our units can also cut their consumption by up to 80%.

Space saving multi outdoor units

Connect up to five indoor units with one multi outdoor unit. It is the optimal solutions for supplying all you need for cooling and heating multiple rooms.

Outdoor units and their connectable indoor units

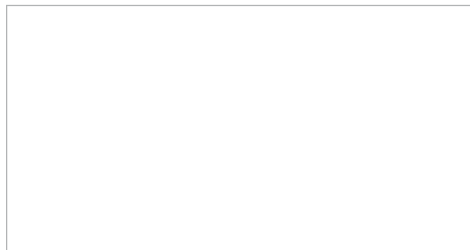
BLUEEVOLUTION

Outdoor unit	Refrigerant		Wall mounted														Concealed ceiling					
	Sound power level	Type/GWP	Charge (kg/TCO ₂ Eq)	Daikin Emura FTXJ-MW/S				CTXM-M		FTXM-M						FTXP-KV			FDXM-F			
																						
Cooling/Heating (dBA)			20	25	35	50	15	20	25	35	42	50	60	71	20	25	35	25	35	50	60	
2MXM40M	60	R-32/ 675	-	•	•	•		•	•	•	•	•			•	•	•	•	•	•		
2MXM50M	61			•	•	•	•	•	•	•	•	•	•			•	•	•	•	•	•	•
3MXM40M	59			•	•	•		•	•	•	•								•	•		
3MXM52M	59			•	•	•	•	•	•	•	•	•	•						•	•	•	
3MXM68M	61			•	•	•	•	•	•	•	•	•	•	•					•	•	•	•
4MXM68M	61			•	•	•	•	•	•	•	•	•	•	•	•				•	•	•	•
4MXM80M	62			•	•	•	•	•	•	•	•	•	•	•	•	•			•	•	•	•
5MXM90M	66			•	•	•	•	•	•	•	•	•	•	•	•	•	•		•	•	•	•

*Note: blue cells contain preliminary data



Daikin Europe N.V. Naamloze Vennootschap Zandvoordestraat 300 · 8400 Oostende · Belgium · www.daikin.eu · BE 0412 120 336 · RPR Oostende (Responsible Editor)



ECPEN16 - 004

0000 - 12/15



Daikin Europe N.V. participates in the Eurovent Certification programme for Air conditioners (AC), Liquid Chilling Packages (LCP), Air handling units (AHU) and Fan coil units (FCU). Check ongoing validity of certificate online: www.eurovent-certification.com or using: www.certiflash.com

The present publication is drawn up by way of information only and does not constitute an offer binding upon Daikin Europe N.V. Daikin Europe N.V. has compiled the content of this publication to the best of its knowledge. No express or implied warranty is given for the completeness, accuracy, reliability or fitness for particular purpose of its content and the products and services presented therein. Specifications are subject to change without prior notice. Daikin Europe N.V. explicitly rejects any liability for any direct or indirect damage, in the broadest sense, arising from or related to the use and/or interpretation of this publication. All content is copyrighted by Daikin Europe N.V.

Printed on non-chlorinated paper.